

DAIVERSE LEARNING ACTIVITY



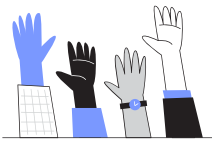
Secondary School Survival Mentoring: By Students, for Students

AUTHOR(S)

Secondary students use AI to create learning guides for younger learners.

Edward Lockhart
Carol Barriuso
Spain

DAIVERSE FRAMEWORK



[What part(s) of the [Daiverse Framework](#) are covered in the scenario?]

AI TEACHING ASSISTANCE

- Learning Styles Diversity
- Linguistic Diversity
- Cultural Diversity

AI FOR DIFFERENTIATED INSTRUCTION

- Attention and Concentration Enhancement
- Thinking and Reasoning Enhancement
- Memory Boost

AI-DRIVEN ACCESSIBILITY

- Self-regulation Development
- Learning Needs Development
- Speech and Communication Development

AI EDTECH TOOL



[NotebookLM](#), [Leonardo](#), [Mylens](#)

AGE GROUP



15-16 (& 11-12)

TIMING of ACTIVITY



2 sessions of 60 min.

OBJECTIVE(S)



- To create engaging, age-appropriate materials that help primary students understand and apply The Sacred Palace memory technique.
- To develop secondary school students' skills in using AI tools for educational content creation while fostering empathy for younger learners.

DESCRIPTION



The activity will take place over two sessions, each lasting one hour.

Session 1: Preparing for Material Creation

In the first session, students will revisit the concept of The Sacred Palace, also known as the memory palace, which they have been using throughout high school. They will watch the TED Talk by Joshua Foer as a refresher and discuss its core ideas, reinforcing their understanding of how memory can be enhanced using imaginative visualization techniques. Afterwards, students will be organized into small groups, each with a different AI tool to create a variety of support materials. The teacher will help them understand the tools they will be using in the next session.

Session 2: Creating Materials with AI

In this second session, each group of students will create a different type of material to help primary students learn The Sacred Palace technique in a simple and engaging way:

- NotebookLM: One group will use NotebookLM to create a step-by-step written guide about The Sacred Palace technique. This guide will be written in A2 (CEFR) level English, suitable for younger learners.
- LeonardoAI: Another group will use LeonardoAI to illustrate the guide. These illustrations will make the written material more engaging and visually appealing, helping primary learners better understand the memory technique.
- MyLensAI: A third group will use MyLensAI to create a slideshow presentation. This presentation will break down The Sacred Palace technique into simple, easy-to-follow slides, which can be used by teachers or students themselves to explain the concept.
- NotebookLM (Podcast): A final group will use NotebookLM to create a short podcast explaining the technique. The podcast will be designed to be easy to understand, using simple language, and will offer a different, auditory way for the primary students to learn about the memory palace.

Expected Outcomes

By the end of these sessions, the secondary school students will have developed several types of resources that primary students can use to enhance their memory skills. The process will not only help them learn how to use different AI tools effectively but also foster empathy as they consider how to explain a complex idea to younger students in simple, engaging ways.

ASSESSMENT & FEEDBACK



To evaluate the students' performance and support their learning, the following approaches will be used:

- Assessment for Learning (AfL): Throughout both sessions, the teacher will actively observe and provide formative feedback, focusing on how well the students understand the memory technique and their use of AI tools. This will help guide their progress and make adjustments as needed.
- Assessment as Learning (AaL): Students will be encouraged to reflect on their group work and contributions. Each group member will assess their understanding of The Sacred Palace technique and their effectiveness in creating the materials. Peer feedback will also be used to foster collaborative improvement.
- Assessment of Learning (AoL): At the end of the second session, the final products created by each group will be evaluated based on criteria such as clarity, appropriateness for the primary audience, creativity, and effective use of AI tools. The teacher will assess how well the materials convey the memory technique and meet the needs of younger learners.

TIPS & RESOURCES



Tips for Success:

- Encourage students to think about the primary audience's level of understanding and simplify complex ideas accordingly.
- Remind students to work collaboratively, ensuring each member contributes to the final product.
- Guide students to use visuals effectively to make content more engaging for younger learners.

- Encourage creativity and personalization in their materials to make them memorable for primary students.

Resources:

- [TED Talk by Joshua Foer](#): Provides foundational knowledge of The Sacred Palace technique.
- [NotebookLM](#): Used for creating written guides and podcasts.
- [LeonardoAI](#): A tool to create engaging illustrations.
- [MyLensAI](#): To develop slideshow presentations.
- Examples of Memory Palaces: Provide [examples](#) of how memory palaces can be used in real-life scenarios to help inspire students.